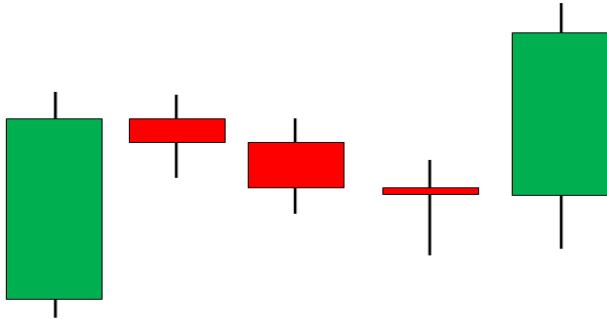


Name and Candlestick configuration

Properties and conditions

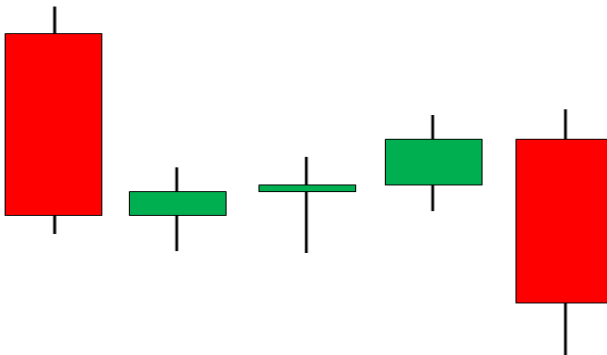
Rising three method



Bullish continuation

1. Composed of 5 candles
2. The market must be in an **uptrend**
3. The 1st and the 5th candle must be long **green** candles
4. The three candles in the middle must be small candles, ideally dojis or small **red** candles.

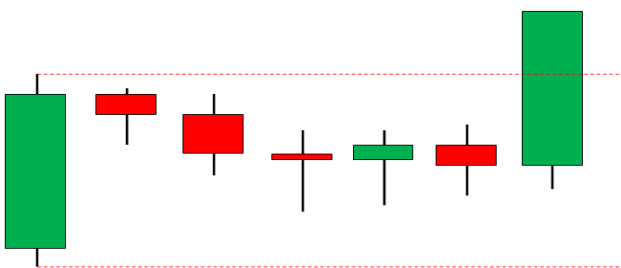
Falling three method



Bearish continuation

1. Composed of 5 candles
2. The market must be in a **downtrend**
3. The 1st and the 5th candle must be long **red** candles
4. The three candles in the middle must be small candles, ideally dojis or small **green** candles.

Master Candle



Bullish or Bearish continuation

1. Composed of 5 or more candles (max 11)
2. It is like a falling or rising three method with more candles in the second phase