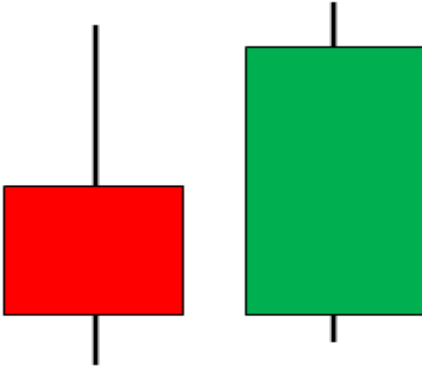


## Name and Candlestick configuration

## Properties and conditions

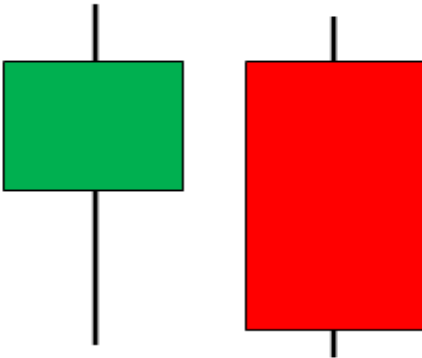
### Bullish Engulfing



#### Bullish reversal

1. Two candle pattern
2. Market must be in a **downtrend**
3. The first candle must be **red**
4. The second candle must be **green**
5. The real body of the second candle surrounds the real body of the first
6. The position of the shadows, on either candles, doesn't matter

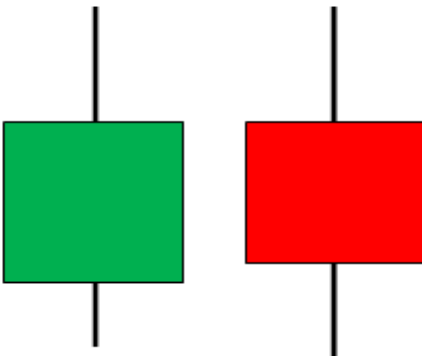
### Bearish Engulfing



#### Bearish reversal

1. Two candle pattern
2. Market must be in an **uptrend**
3. The first candle must be **green**
4. The second candle must be **red**
5. The real body of the second candle surrounds the real body of the first
6. The position of the shadows, on either candles, doesn't matter

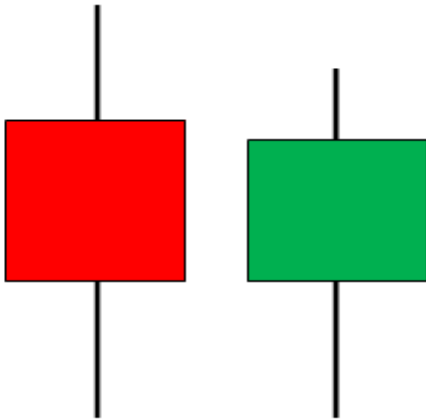
### Tweezers Top



#### Bearish reversal

1. Two candle pattern
2. Market must be in an **uptrend**
3. The first and the second candle have the same high

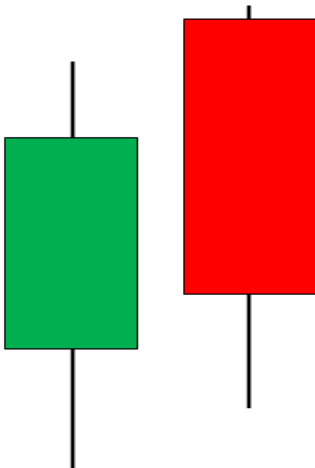
## Tweezers Bottom



**Bullish reversal**

1. Two candle pattern
2. Market must be in a **downtrend**
3. The first and the second candle have the same low

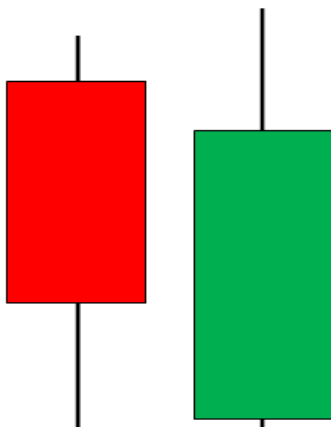
## Dark Cloud Cover



**Bearish reversal**

1. Two candle pattern
2. Market must be in an **uptrend**
3. The first candle must be **green**
4. The second candle must be **red**
5. The market gaps higher on the open of the second candle
6. The real body of the second candle must close into the body of the first candle

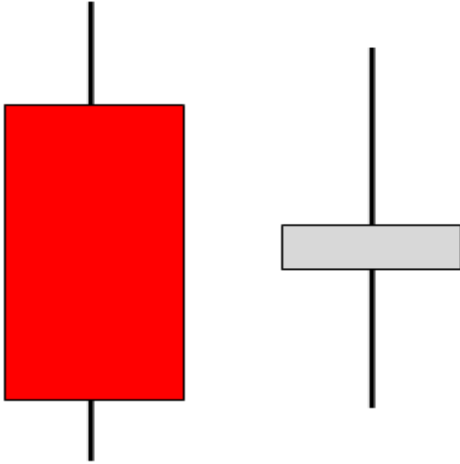
## Piercing Pattern



**Bullish reversal**

1. Two candle pattern
2. Market must be in a **downtrend**
3. The first candle must be **red**
4. The second candle must be **green**
5. The market gaps lower on the open of the second candle
6. The real body of the second candle must close into the body of the first candle

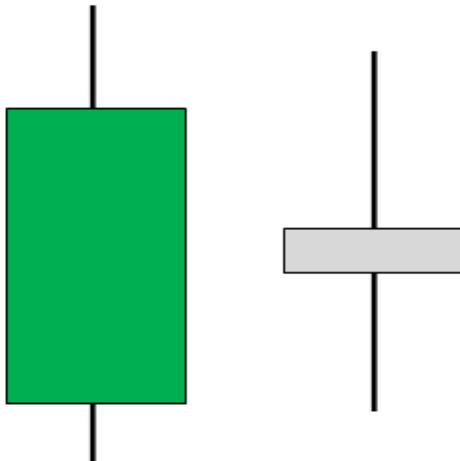
## Bullish Harami



### Bullish reversal

1. Two candle pattern
2. Market must be in a **downtrend**
3. The first candle must be **red**
4. There's a gap high between the two candles
5. The second candle has a very small real body, the color is not important

## Bearish Harami



### Bearish reversal

1. Two candle pattern
2. Market must be in an **uptrend**
3. The first candle must be **green**
4. There's a gap low between the two candles
5. The second candle has a very small real body, the color is not important